

TECHNICAL SPECIFICATIONS
HIAB X-HIPRO 858



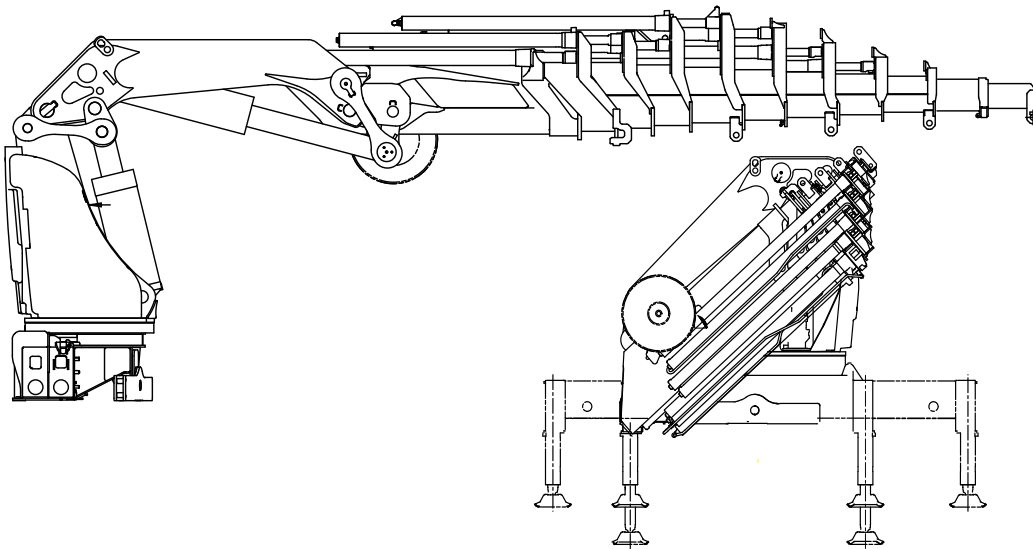
BUILT TO PERFORM



HIAB

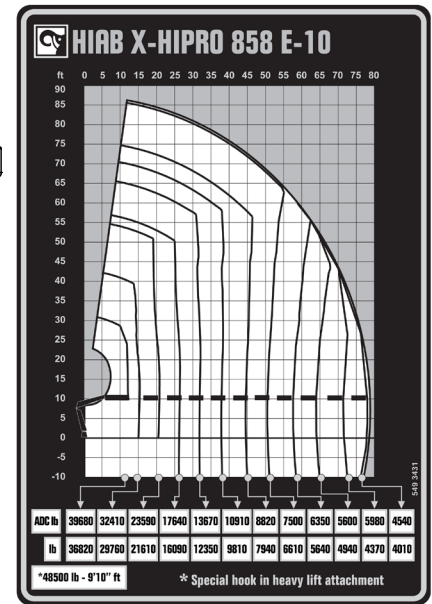
HIAB X-HIPRO 858 BASIC DATA

TECHNICAL DATA	EP-4	EP-5	EP-6	E-7	E-8	E-10
Max. lifting capacity (ft-lbs)	545 050	539 190	534 700	523 700	517 050	510 390
Outreach, hydraulic extensions (ft)	38' 9"	46' 7"	53' 10"	57' 9"	64' 8"	78' 9"
Outreach / lifting capacity (ft-lbs)	13' 5" - 39 680 19' 8" - 27 560 25' 3" - 21 160 31' 6" - 16 980 38' 1" - 13 890 - - - - -	13' 1" - 39 680 20' 4" - 26 010 26' 3" - 19 840 32' 6" - 15 650 39' 1" - 13 010 46' 3" - 10 910 - - - -	12' 10" - 39 680 20' 4" - 25 790 26' 3" - 19 400 32' 6" - 15 430 39' 1" - 12 570 46' 3" - 10 470 53' 6" - 9 040 - - -	12' 6" - 39 680 20' 0" - 25 350 25' 3" - 19 400 31' 2" - 15 210 37' 5" - 12 350 44' 0" - 10 910 50' 2" - 8 820 56' 9" - 7 720 - -	12' 6" - 39 680 20' 0" - 24 910 25' 7" - 18 740 31' 2" - 14 770 37' 5" - 11 680 44' 0" - 9 700 50' 2" - 8 270 57' 1" - 7 170 63' 8" - 6 390 - -	11' 10" - 39 680 20' 8" - 23 390 26' 3" - 19 400 31' 10" - 13 670 38' 1" - 10 910 44' 7" - 8 820 50' 10" - 7 500 57' 9" - 6 350 64' 4" - 5 600 71' 6" - 4 980 78' 1" - 4 540 -
Slewing angle (°)	∞	∞	∞	∞	∞	∞
Height in folded position (in)	99	102	102	99	99	102
Width in folded position (in)	98	99	99	98	98	99
Installation space needed (in)	62	64	69	69	73	73
Weight, "standard" crane without stabilizers (lbs)	13 400	14 130	14 530	15 060	16 140	16 980
Weight, stabilizer equipment (lbs)	2 690 - 3 000	2 690 - 3 000	2 690 - 3 000	2 690 - 3 000	2 690 - 3 000	2 690 - 3 000



X-HiPro 858 E-10
Side View

X-HiPro 858 E-10
Front View



Disclaimer. Hiab cranes have been built to meet the highest standards of safety and service life and have been thoroughly tested. Strength calculations for this model have been carried out in accordance with EN13001 in fatigue class S2. Cargotec's certified Quality Assurance System complies with ISO 9001. Some of the items in our literature may be extra equipment. Certain applications may require an official permit. We reserve the right to change technical specifications without prior notice. Hiab cranes produced for EU-countries are CE marked and comply with the European Standard EN12999.

Hiab is the world's leading provider of on-road load handling equipment. Customer satisfaction is the first priority for us. Hiab's product range includes HIAB loader cranes, JONSERED recycling and forestry cranes, LOGLIFT forestry cranes, MOFFETT truck mounted forklifts, and MULTILIFT demountables, as well as DEL, WALTCO, and ZEPRO tail lifts.

www.hiab.us.com
Hiab is part of Cargotec.
www.cargotec.com

Hiab USA Inc
12233 Williams Road
Perrysburg, OH 43551 USA
tel. 419 482 6000
fax. 419 482 6001

