

TECHNICAL SPECIFICATIONS
HIAB X-HIPRO 558

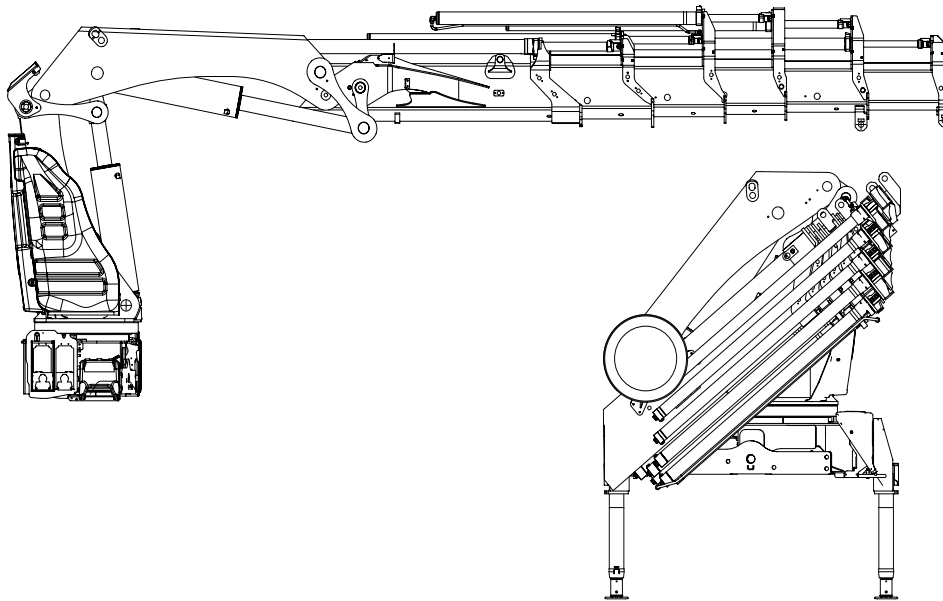


BUILT TO PERFORM



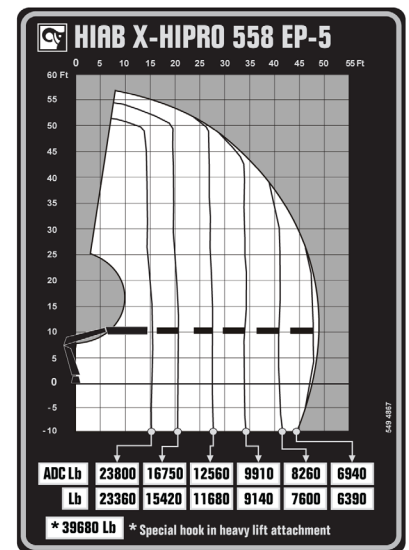
HIAB X-HIPRO 558 BASIC DATA

TECHNICAL DATA	EP-3	EP-4	EP-5
Max. lifting capacity (ft-lbs)	367 900	362 000	359 190
Outreach, hydraulic extensions (ft)	33' 10"	39' 8"	47' 7"
Outreach / lifting capacity (ft-lbs)	15' 1" - 24 460	14' 5" - 25 120	15' 1" - 23 800
	20' 1" - 17 410	20' 4" - 17 630	21' 0" - 16 750
	27' 2" - 13 440	26' 6" - 13 220	27' 3" - 12 560
	33' 9" - 10 680	33' 1" - 10 460	33' 10" - 9 910
	-	39' 8" - 8 700	40' 4" - 8 260
	-	-	47' 7" - 6 940
Slewing angle (°)	∞	∞	∞
Height in folded position (in)	98	98	98
Width in folded position (in)	100	100	100
Installation space needed (in)	50	51	51
Weight, "standard" crane without stabilizers (lbs)	9 000	9 410	10 057
Weight, stabilizer equipment (lbs)	1 880 - 2 120	1 880 - 2 120	1 880 - 2 120



X-HiPro 558 EP-5
Side View

X-HiPro 558 EP-5
Front View



Disclaimer. Hiab cranes have been built to meet the highest standards of safety and service life and have been thoroughly tested. Strength calculations for this model have been carried out in accordance with EN13001 in fatigue class S2. Cargotec's certified Quality Assurance System complies with ISO 9001. Some of the items in our literature may be extra equipment. Certain applications may require an official permit. We reserve the right to change technical specifications without prior notice. Hiab cranes produced for EU-countries are CE marked and comply with the European Standard EN12999.

Hiab is the world's leading provider of on-road load handling equipment. Customer satisfaction is the first priority for us. Hiab's product range includes HIAB loader cranes, JONSERED recycling and forestry cranes, LOGLIFT forestry cranes, MOFFETT truck mounted forklifts, and MULTILIFT demountables, as well as DEL, WALTCO, and ZEPRO tail lifts.

www.hiab.us.com
Hiab is part of Cargotec.
www.cargotec.com

Hiab USA Inc
12233 Williams Road
Perrysburg, OH 43551 USA
tel. 419 482 6000
fax. 419 482 6001



V2016.11.03